

Supplementary Data

Table S1: The sequences of primers used in this study

Primers	Sequence (5' → 3')
AcCMF1-1250-1-F	ATGTATGCTGAGCCTAGGC
AcCMF1-1250-1-R	ATTTTACTTATTTTGTGATTTTG
AcCMF1-GFP-F	cccaagcttATGTATGCTGAGCCTAGGC (HindIII)
AcCMF1-GFP-R	tccccgggAAAATTTTGTGATTTTGTGACTT (SmaI)
AcCMF1-F	TAGAATATGATCTTGGTGCT
AcCMF1-R	AACTGGAAGTTTAAGTTCTG
AcActin-F	ACACGGCCTGGATAGCAACAT
AcActin-R	AGAGCAGTATTCCCAAGCATT

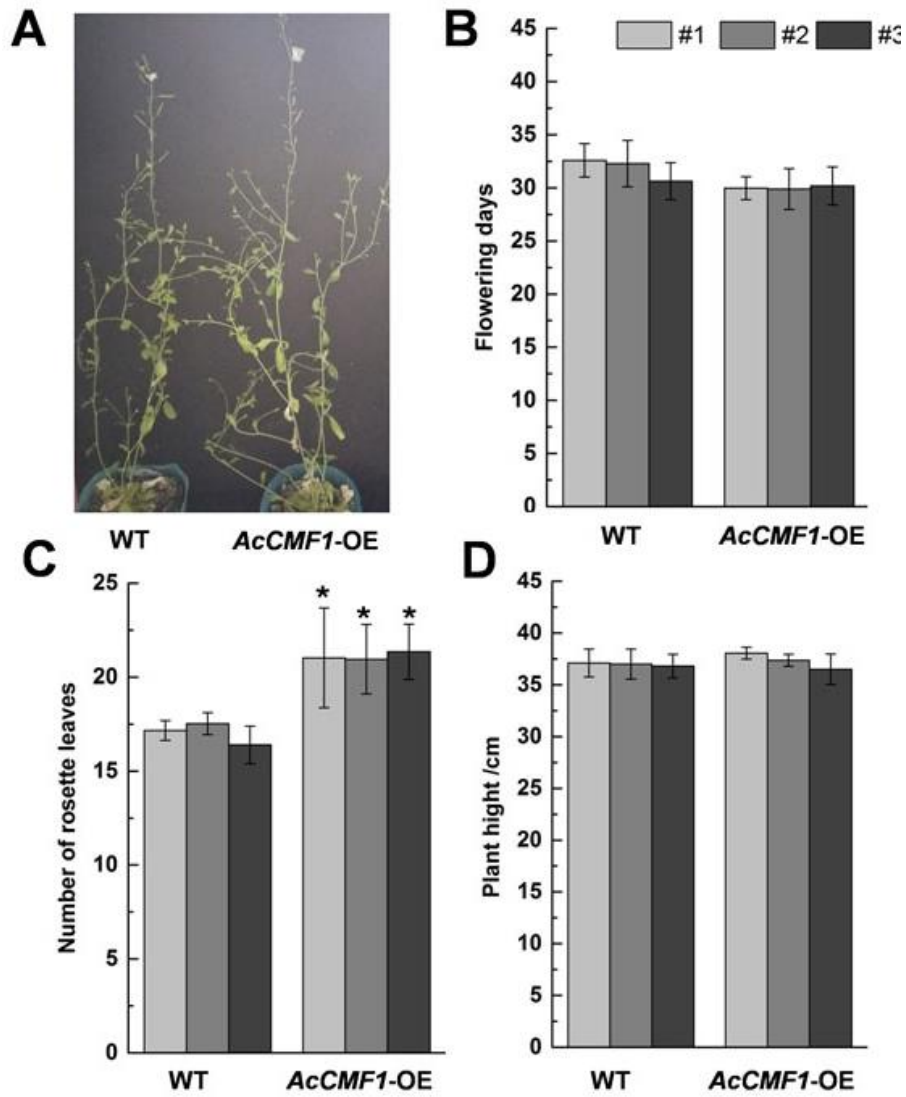


Fig. S1: Overexpression of *AcCMF1* in wild-type Arabidopsis. (A) Phenotype (B) Flowering time (C) Number of rosette leaves (D) Plant height of wild type, *AcCMF1*-OE lines under LD condition. Error bars indicate the standard errors. Asterisks indicate the significant differences ($P < 0.05$).

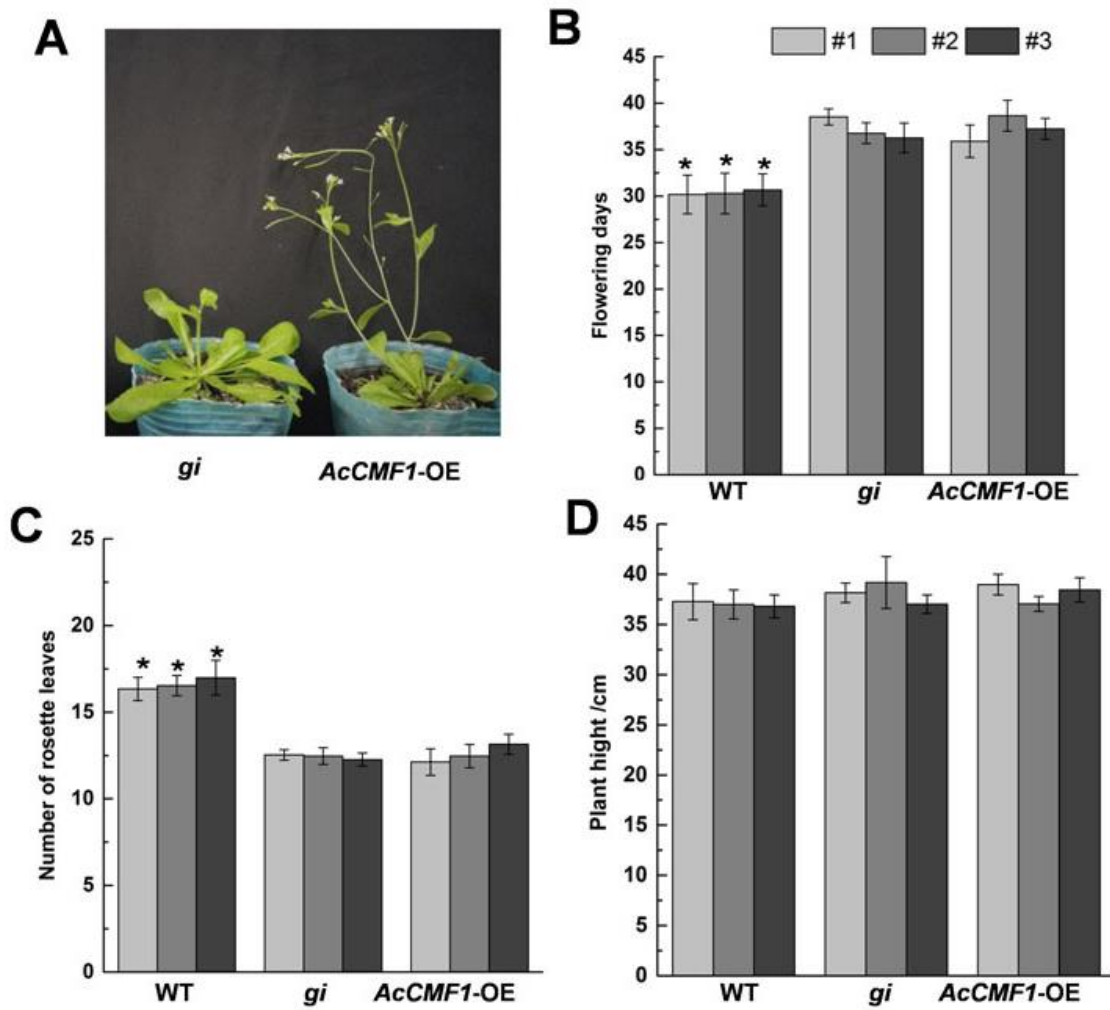


Fig. S2: Overexpression of *AcCMF1* in Arabidopsis *gi* mutant. (A) Phenotype (B) Flowering time (C) Number of rosette leaves (D) Plant height of *gi* mutant, wild type, *AcCMF1*-OE lines under LD condition. Error bars indicate the standard errors. Asterisks indicate the significant differences ($P < 0.05$).

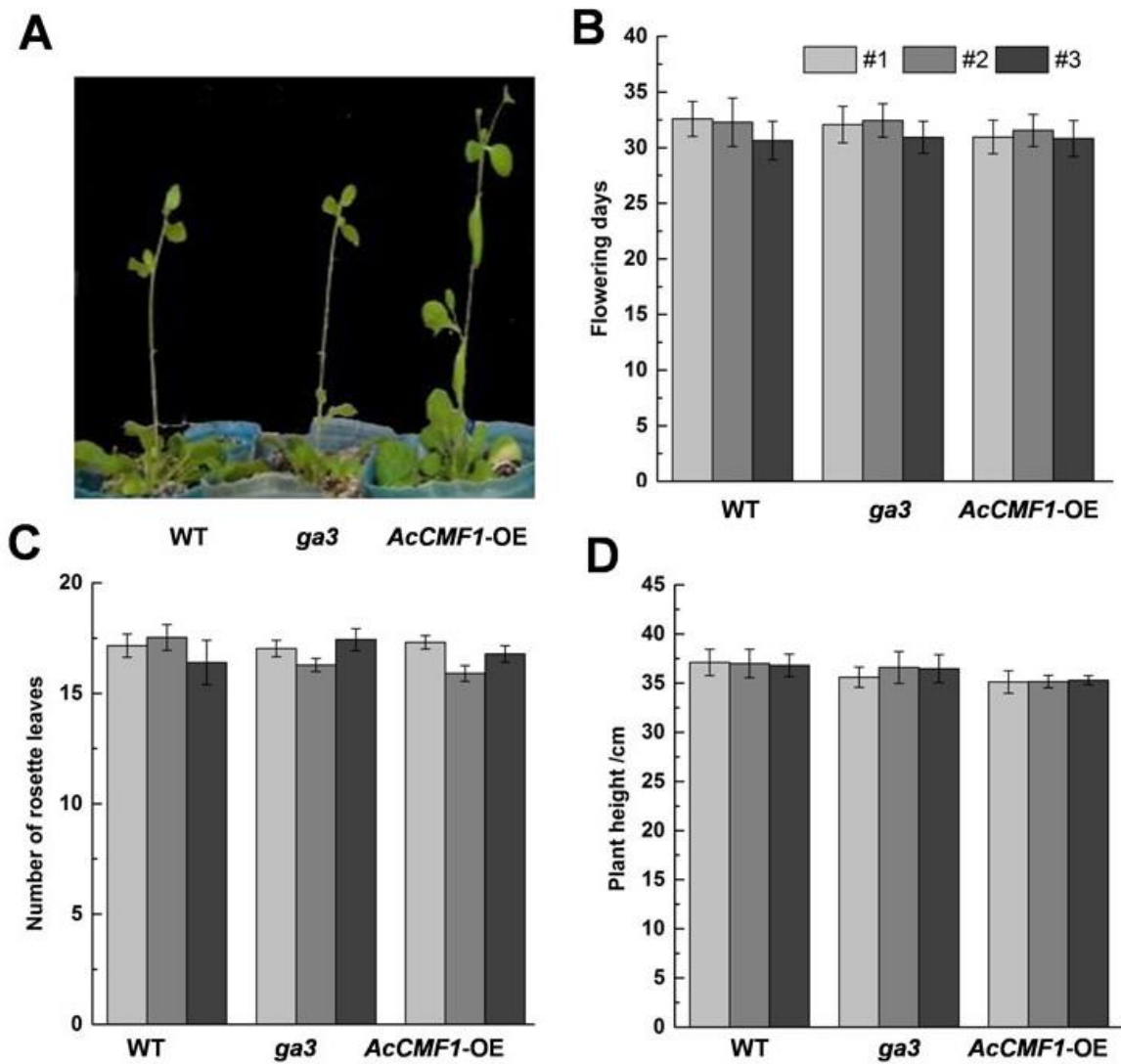


Fig. S3: Overexpression of *AcCMF1* in Arabidopsis *ga3* mutant. (A) Phenotype (B) Flowering time (C) Number of rosette leaves (D) Plant height of *ga3* mutant, wild type, *AcCMF1*-OE lines under LD condition. Error bars indicate the standard errors. Asterisks indicate the significant differences ($P < 0.05$).